



SCANIA FLEET MANAGEMENT

DATA DRIVES DEVELOPMENT

SCANIA

DETAILS MATTER

Scania Fleet Management is a set of services that connects your vehicles and drivers with your office.

You will get vehicle data, fleet position and reviews of driving performance. By just focusing on a single detail you can increase the productivity of your fleet.

And now it also has 2-way communication that includes Messaging, shared Address books and Routing. The result is more control over your business.



TAKE CONTROL OF YOUR FLEET – AND LOWER YOUR COSTS

Scania Fleet Management helps you identify and use the key details needed to increase the productivity of your fleet. The system is already installed in all new Scania trucks – just activate it to connect yourself to your fleet's data.



Monitoring Package



Control Package



Data Access Package

THREE FLEXIBLE PACKAGES TO SUIT YOUR BUSINESS

Scania Fleet Management consists of three different service packages: Monitoring, Control and Data Access. Read more about them on the following pages and find out which package best suits your needs. All three service packages share the following benefits:

Easy and fast

- Start up in minutes
- Quick access to fleet overviews
- Understand graphic reports at a glance

Environmentally smart

- View fuel consumption
- View CO₂ and other emissions

Save money

- Helps you make decisions that cut fuel consumption
- Identifies vehicles that are not being driven optimally
- Service Planning reduces unplanned downtime, saving money

It is easy to get started – just activate it

To start using any of the Scania Fleet Management services you will need a Scania Communicator telematics unit installed in the vehicle. This pre-installed unit regularly collects, saves, sends and receives information for analysis and presentation on the Scania Fleet Management portal and in the Monitoring Report. Stay on top of every situation with real-time information and 2-way communication.

Improving your profits

Scania Fleet Management puts clear and useful information in your hands so that you can understand how your fleet is performing and what is costing you money. You will spot potential problems early, be able to coach drivers into adopting more economical driving habits and improve your service planning. Furthermore, monthly and yearly summary reports are also provided, their content being invaluable in identifying long-term trends and patterns.



Book your demo today

Contact your local Scania dealer and find out how our Scania Fleet Management can reduce your operating costs.



MONITORING PACKAGE

Full fleet data on all your vehicles

FULL FLEET DATA ON ALL YOUR VEHICLES

Scania Fleet Management Monitoring Package is an easy-to-use service that puts you on the right track to improving your fleet economy – even for small fleets. You'll receive weekly email summaries covering all of your vehicles. From these you can see at a glance how each vehicle is performing and which ones need special attention.

Weekly information from the Monitoring Report can quickly help you reduce operating costs. You will spot potential problems early, be able to guide drivers into adopting more economical driving habits and improve your service planning. You will also receive monthly summary reports and a summary at the end of the year, allowing you to identify and act upon trends and patterns that cover longer periods of time.

Since the reports do not track individual drivers but rather individual vehicles, this service is particularly

suitable for smaller fleets. Trends are indicated with arrows: green for improvement and red for degradation.

Service planning

You can also access the Scania Fleet Management portal to manage your service planning. Service Planning provides an overview of all the equipment in your fleet, along with their maintenance plans, including a calendar for keeping track of maintenance and repairs. With the free Scania Fleet Management App, you get access to the defect reporting function and your drivers can instantly report problems and supply photographs directly from the site of the incident. Defect reports are also automatically reported from the vehicle. Combine defect reports with planned maintenance and send as a work order to your workshop.

Benefits:

- Easy to use
- No prior knowledge necessary
- View trends since last report
- Quick overview of your fleet
- Access to Service Planning through the Scania Fleet Management portal

WITH THE MONITORING PACKAGE, YOU WILL RECEIVE REPORTS AND GET ACCESS TO THE SERVICE PLANNING IN THE FLEET MANAGEMENT PORTAL

The monitoring report

Scania Driver Support

If your vehicle is equipped with Scania Driver Support, you will see the average score here.

Change in fuel consumption

See at a glance how your entire fleet is performing on fuel consumption. Are things better this week?

CO₂ emissions

Show your customers what you are doing for the environment – in black and white – and become eligible for additional transport assignments.

Red and green arrows

Spot trends since the last report. Are some trucks improving? Green tells you when a factor affecting fuel consumption is improving. Red indicates a negative trend.

Coasting

Driving with a gear engaged and without fuel injection is good driving behaviour.

Economical speed

High speed consumes more fuel than necessary. You can set a speed limit

and follow it up (83 km/h is preset).

Idling

Excessive idling time wastes fuel. Can you coach drivers or adjust routes to reduce idling time?

Fuel consumption

Find the inefficient fuel consumers that need attention.

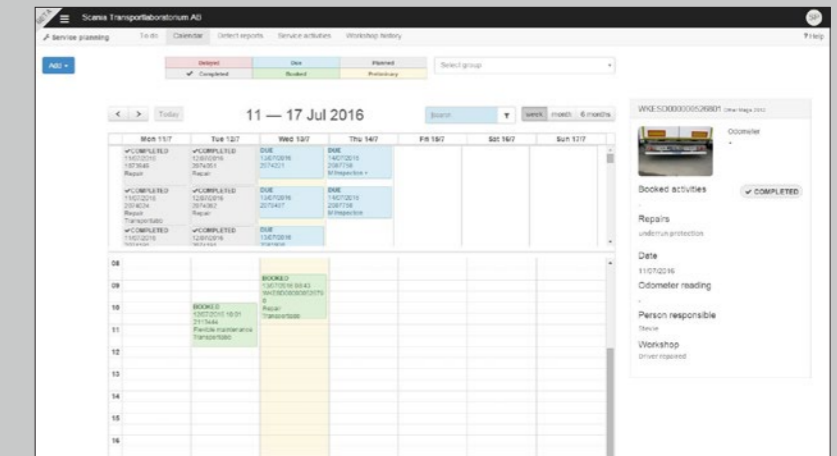
Heavy braking

Excessive braking might indicate a need for a new driving strategy that is less aggressive.

The calendar gives you an overview of upcoming services.

The repair is saved and visualised together with planned maintenance in the calendar.

Service planning – via Fleet Management Portal



Page 1(1)
Scania Vehicles
01/03/2016–31/03/2016

Scania Fleet Management

Monthly overview

Change in fuel consumption*

Percentage change: -4.6%

Total change:** -7806 litres

Change in carbon dioxide emissions*

Average change: -36 g/km

Total change:** -21.0 tonne

* compared to previous period
** for distance driven during period (578159 km)

Vehicle	Start	Stop	Odometer	Distance	Scania Driver Support	Coasting	Idling	Speeding	Heavy braking	Fuel consumption	Carbon dioxide
BJP663	01/03/2016 00:04	01/04/2016 00:04	552325	36396	-	↗ 11.2%	↘ 4.4%	↘ 7.1%	↘ 0.1	26.7	26.2
BJP774	01/03/2016 00:04	01/04/2016 00:04	544674	36863	-	↗ 11.6%	↘ 3.6%	↘ 6.0%	↘ 0.1	28.4	28.3
BOT173	01/03/2016 00:13	01/04/2016 00:30	527141	33844	-	↗ 13.6%	↘ 3.4%	↘ 4.5%	↘ 0.1	27.6	25.2
DYI102	01/03/2016 00:04	01/04/2016 00:04	511097	38963	-	↗ 12.7%	↘ 3.4%	↘ 11.8%	↘ 0.1	28.0	29.5
HSB985	01/03/2016 00:01	01/04/2016 00:01	501245	37781	-	↗ 12.1%	↘ 4.2%	↘ 4.9%	↗ 0.1	29.5	30.1
BWS013	01/03/2016 00:13	01/04/2016 00:29	401999	38807	↗ 73%	↗ 14.2%	↘ 3.1%	↘ 13.1%	↘ 0.1	27.3	28.6
BWS117	01/03/2016 00:04	01/04/2016 00:04	409210	39896	↗ 71%	↗ 14.2%	↘ 3.4%	↘ 11.3%	↘ 0.1	28.2	30.4
BWS204	01/03/2016 07:33	01/04/2016 00:29	394795	36415	↗ 76%	↗ 14.0%	↘ 4.0%	↘ 7.2%	↘ 0.1	27.8	27.3
COD899	01/03/2016 00:04	01/04/2016 00:04	515471	11663	-	↗ 11.2%	↗ 4.7%	↗ 11.8%	↘ 0.1	28.7	9.0
Average:						↗ 13.0%	↘ 3.9%	↘ 8.3%	↘ 0.1	27.9	

Units: Odometer: odometer in km, Distance: total km, Scania Driver Support: average points in % for all categories, Coasting: % of distance, Idling: % of run time, Speeding: % of run time, Heavy braking: average number/100 km, Fuel consumption: average consumption l/100 km, Carbon dioxide: total number tonnes

Defect Report

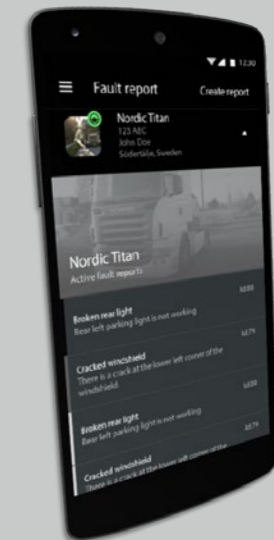
Drivers can send defect reports using their phone, just like before.

The defect reports are sent to office personnel.

Drivers can edit existing defect reports.

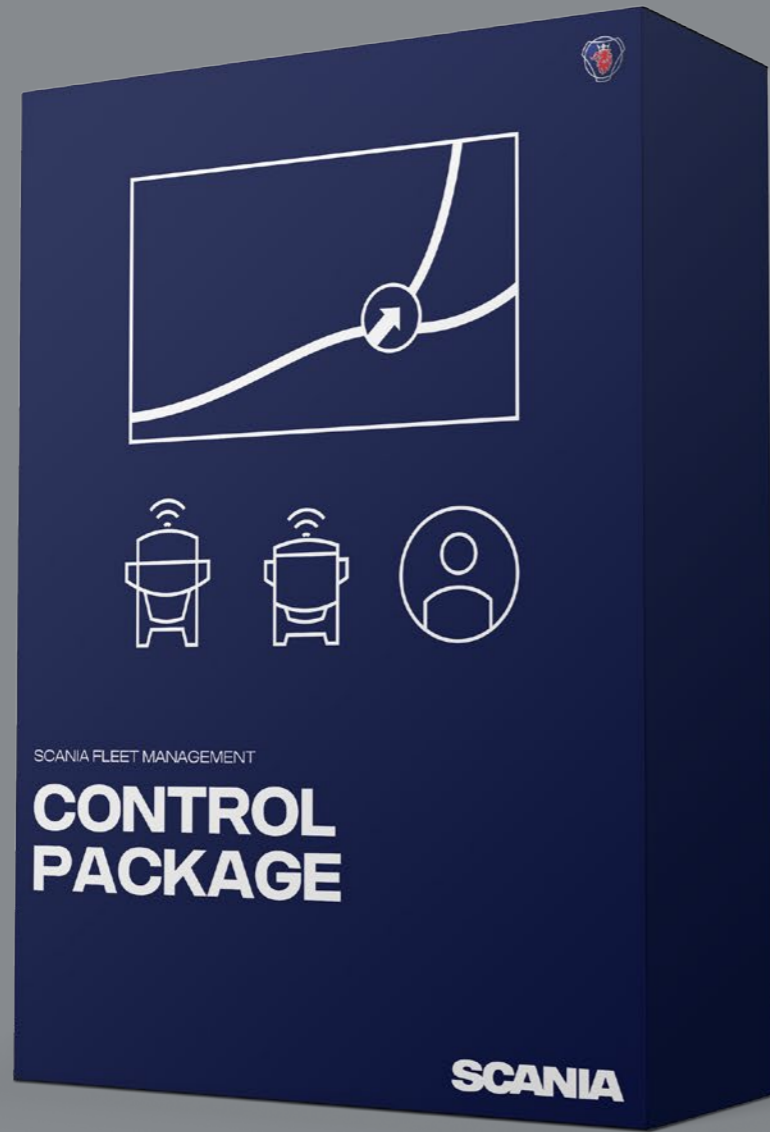
Drivers can view images in defect reports.

Drivers can see the status of their defect reports.



Looking for additional features?

If you need information on individual drivers, map support, environmental reports or more – upgrade to the Control Package.



CONTROL PACKAGE

Follow up on vehicles and drivers to map locations in real time

FOR EFFICIENT PLANNING AND LOCATION SUPPORT

The Control Package is an advanced set of services that help fleet owners utilize vehicle and driver follow-ups and operational information to support their transport process. As is the case with the Monitoring Package, the Control Package allows access to our App, the Scania Fleet Management portal on any computer and all the information offered through the Monitoring Package. However, you can also access additional useful information and functions including the following:

- **Driver Evaluation** – lets you check drivers' driving style so you can help them improve their driving to save fuel and reduce vehicle wear.
- **Vehicle Evaluation** – lets you check your vehicles' performance parameters including fuel economy and emissions so you can troubleshoot maintenance to reduce downtime.
- **Fuel report** – provides an overview of fuelling events such as when and where refuelling occurred, which driver carried it out and how much the fuel level changed.
- **Events report** – provides a list of occurred events in the fleet. An event could be, for example; Low engine oil pressure, or Bus door opened.

- **Vehicle tracking** – lets you follow your fleet and monitor each vehicle's status. Know each driver's location, speed, accumulated driving time. Set Geofence alarms for borders and restricted areas.
- **Fleet position** – shows the fleet's current positions, vehicle status (on/off, moving direction), and accumulated driving time.
- **Environmental report** – reviews the emissions caused by a specific vehicle during a selected period.
- **Messaging Service** – offers quick and easy communication across your workforce through instant messaging, increasing efficiency and reducing downtime. For further peace of mind, the system also offers traceability and safe storage of historical communication.

With the Control Package, you can stay on top of your fleet – wherever it is, and wherever it is heading.

More frequent data reporting
The Control Package is particularly effective for fleet owners who need the most up-to-date vehicle information available at all times. Choose to be updated at every 10,5 or 1 minute intervals.

Benefits:

- Easy to use
- Access through the Scania Fleet Management portal and App
- Spot deviations in vehicle and driver performance
- Follow performance trends
- Compare vehicles and drivers
- Plan for Driver Training and Driver Coaching
- Events reports
- Plan service according to how your fleet runs
- Map functionality
- Vehicle tracking
- Geofencing
- Real-time and accumulated driving-time information



KNOW EVERYTHING. ACT ACCORDINGLY.

The Control Package gives you 24-hour access to key fleet details via the Scania Fleet Management Portal. Log in from anywhere and discover trends and tendencies – no matter how small – that could impact your business.

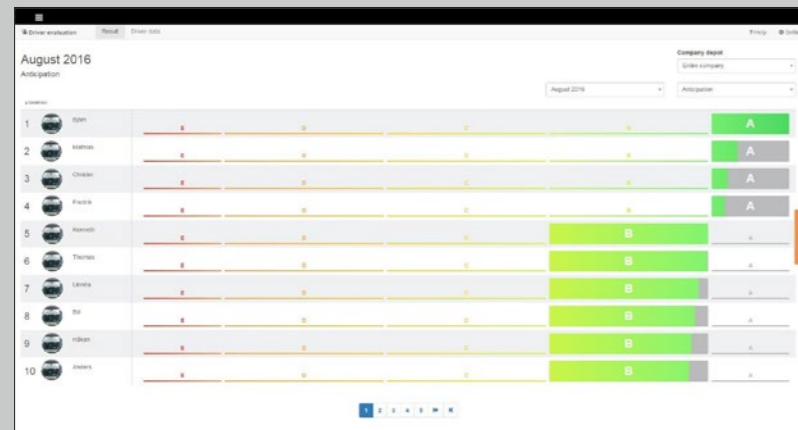
Driver Evaluation

A good driving style saves fuel and reduces vehicle wear. Driver

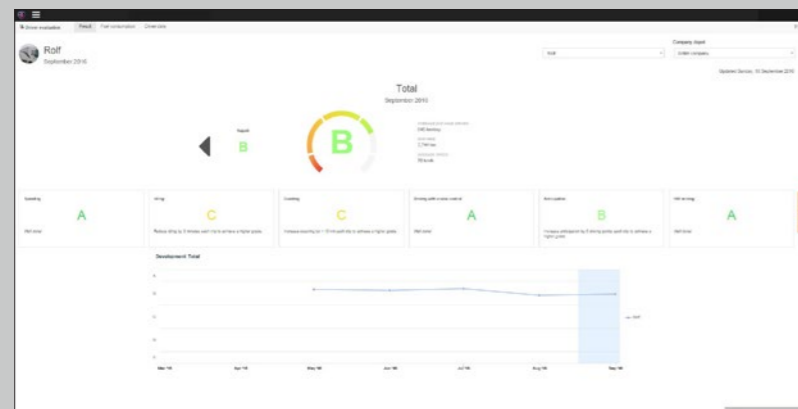
Evaluation lets you check your drivers' driving style to identify areas of improvement. An automated driver assessment takes both the characteristics of the trip and the driving data into consideration to make a fair assessment.

- Identify the drivers with the greatest potential for improvement by ranking

- Identify each driver's tendencies, measured against benchmarks
- Take action to help improve driving skills according to best practices
- Follow each driver's development over a period of time



Each trip is scored from A to E. Trip parameters are pre-set according to the operation type. To help improve skills, drivers are ranked according to their trip performance making it easier to implement best practices where needed.

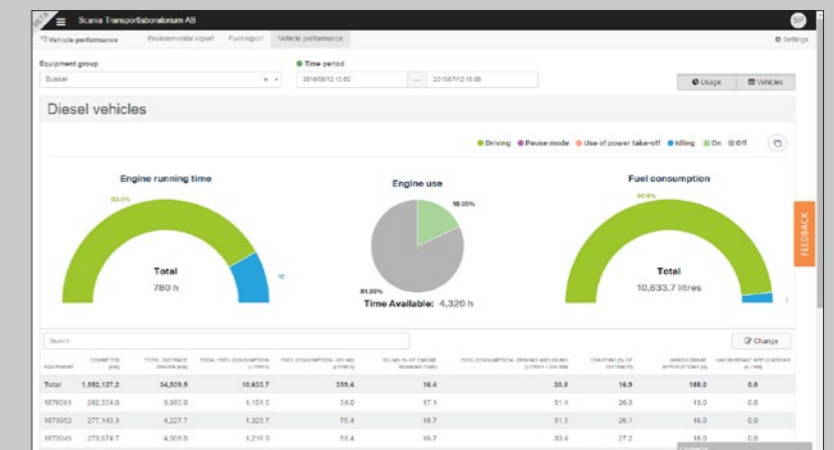


Click on an individual driver in the ranking list to see their detailed results. Ratings for each parameter show where improvements can be found. The graph shows the driver's development over time.

Vehicle evaluation

Often the details that matter are the deviations from the normal.

With the Vehicle evaluation report you are quickly given the details that need your attention.



Fleet position details

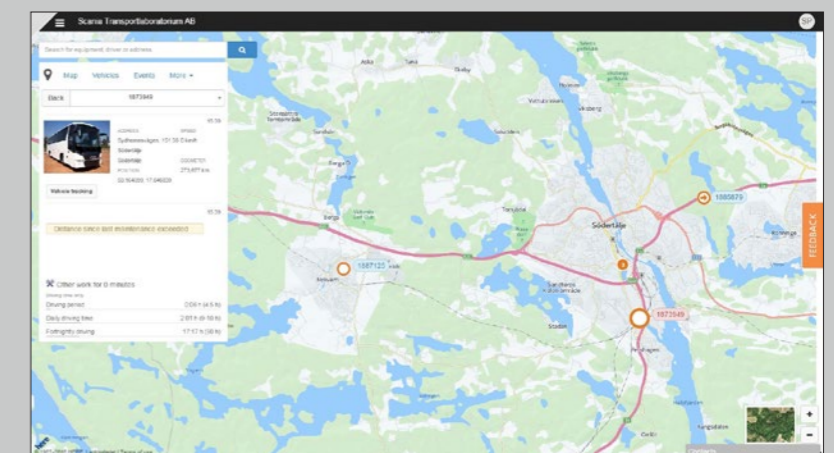
Detailed driver information and accumulated driving time helps you plan pickups and deliveries.

The vehicle direction is shown by an arrow.



If a vehicle has entered or left a pre-set area, you can be alerted by Geofence.

You can see warnings and exceptions for a number of different events.





DATA ACCESS PACKAGE

Enabling integration and utilisation of vehicle and driver data

SEAMLESS INTEGRATION WITH EXISTING SYSTEMS

Many fleet owners require access to data in a way that facilitates integration with existing systems. Our Data Access Package enables this, allowing for the utilisation of data from the connected vehicle. This is a great alternative for customers with mixed fleets who already use other telematics systems. Furthermore, all new Scania vehicles are prepared with the necessary hardware.

With the Data Access Package you can access vehicle data in compliance with the remote FMS-Standard (rFMS).

A new web service standard, agreed between leading truck, bus and coach manufacturers, enables easy access to vehicle information online, independent of vehicle brand. <http://www.fms-standard.com/>



Benefits:

- Offers access to full fleet data in a standardised format
- Enables integration with existing systems
- Receive updates from your vehicles with defined intervals (10,5 or 1 minute)
- All new Scania vehicles are prepared with the hardware



Get started

Contact your local Scania dealer for more information on how to get started with the Data Access Package.



SCANIA FLEET MANAGEMENT – TECHNICAL SUMMARY

What do the services offer?	Monitoring	Control	Data Access
Fuel consumption reports and trends by email	●	●	●
CO ₂ emission reports and trends by email	●	●	●
Service planning based on time, distance or both	●	●	●
Events report		●	
Environmental report – all emissions		●	
Performance trends per driver or vehicle: fuel consumption, driving style and usage during any period		●	
Advanced vehicle and driver evaluation		●	
Fleet position and vehicle status		●	
Driving time report with accumulated driving time for drivers*		●	
Vehicle tracking over a chosen period		●	
Geofence alarms if a vehicle enters or leaves a predetermined area		●	
Quick and easy communication across your workforce		●	
Two-way communication with the vehicle, messaging, address book and routing**		●	
Traceability and secure storage of historical conversations		●	
Provides full access to fleet data in a standardised format with existing telematics systems		●	●

Requirements:

- Communicator unit installed in vehicle
- Email address for automatic reports

*Requires at least Scania Communicator (2.0) and a European digital tachograph supporting driving time information.

**Requires new generation Scania with navigation system.



Book your demo today

Contact your local Scania dealer and find out how Scania Fleet Management can reduce your operating costs.



RESTAURANGAKADEMIEN

