

Scania (Malaysia) Sdn Bhd (518606-D)
No.1 Jalan Tiang U8/93
Bukit Jelutong Industrial Park,
40150 Shah Alam, Selangor D.E.
Malaysia

Tel: +603 7845 1000

www.scania.com.my

Scania pursues an active policy of product development and improvement. For this reason, Scania reserves the right to make changes relating to design and specification, its products and services and any information without prior notice. Furthermore, due to national or EU legal requirements, some products and services may not be available in all markets.

For further information in these respects, please contact your local dealer or visit www.scania.com.my



10.1%
SPEED

13.5%
IDLING

27508 km
DISTANCE

94.7%
UPTIME

Scania Fleet Management
– because details matter.



DETAILS MATTER

Scania Fleet Management is a set of services that connects your vehicles with your office. You'll get vehicle data, fleet position and reviews of driving performance.

By just focusing on a single detail you can increase the productivity of your fleet. The result is more control over your business.

Take control of your fleet — and lower your costs

Coasting, heavy braking or idling – what detail can you change? Vehicle and driver performance can save up to 10% in fuel economy. Take control of your fleet and get the most out of your business.

Scania Fleet Management helps you identify and use the key details needed to increase the productivity of your fleet. The system is already installed in all new Scania trucks – just activate it to connect yourself to your fleet's data.



Monitoring Package



Control Package

Two flexible packages to suit your business

Scania Fleet Management consists of two different service packages: **Monitoring** and **Control**. Read more about them and find out which package best suits your needs on the following pages. However, both these service packages share the following benefits:

Easy and fast

- Start up in minutes
- Quick access to fleet overviews
- Understand graphic reports at a glance

Environmentally smart

- View fuel consumption
- View CO₂ emissions and other factors that affect emissions

Save money

- Helps you make decisions that cut fuel consumption
- Identifies vehicles that are being driven unsuitably
- Service Planning reduces unplanned downtime, saving money

CONTROL PACKAGE DATA INTEGRATION

Many fleet owners require access to data in a way that facilitates its integration with existing systems. Our web services allow for this, enabling the integration and utilisation

of data from the connected vehicle. This data is made available in standardised form. Contact your local Scania dealer for more information.

SCANIA MESSAGING SERVICE

This extra service offers quick and easy communication across your workforce through instant messaging. Sharing text, photos and positions increases efficiency and reduces downtime. For further peace of mind, the system also offers traceability and safe storage of historical communication. Communication can take place through both our App and portal, making this an effective compliment to our Control Package.





It's easy to get started — just activate it

To start using any of the Scania Fleet Management services you will need a Scania Communicator telematics unit installed in the vehicle. This discreetly installed unit regularly collects, saves and sends information for analysis and presentation

on the Scania Fleet Management portal or through the Scania Fleet Management App. As your business needs change, it's easy to add services by upgrading to the next level of service package.

Improving your profits

Scania Fleet Management puts clear and useful information in your hands so that you can understand how your fleet is performing and what is costing you money.

You'll spot potential problems early, be able to coach drivers into adopting more economical driving habits and improve your service planning. Furthermore, monthly and yearly summary reports are also provided, their content being invaluable in identifying long-term trends and patterns.

In some cases, excess fuel consumption can be an early sign of a mechanical problem.

With more advanced services, you'll be able to get valuable information that can help you optimise routes and work assignments. And don't forget that with our extra service Scania Messaging you can enjoy many other operational benefits.

Scania Fleet Management is about supporting you all the way in your business.

For a demonstration – *or activation* – of Scania Fleet Management and how it can enhance your fleet operations and save you money, give your local Scania dealer a call.

MONITORING PACKAGE

Full fleet data on all your vehicles

Scania Fleet Management Monitoring Package is an easy-to-use service that puts you on the right track to improving your fleet economy – even for small fleets. You'll receive weekly email summaries covering all of your vehicles. From these you can see at a glance how each vehicle is performing and which ones need special attention – without going through long lists of data.

Weekly information from the Monitoring Report can quickly help you reduce operating costs. You'll spot potential problems early, be able to coach drivers into adopting more economical driving habits and improve your service planning.

You will also receive monthly summary reports and a summary at the end of the year, allowing you to identify and act upon trends and patterns that cover longer periods of time.

How the Monitoring Package works

This service provides weekly, monthly and yearly reports, sent to any email address you choose.

The reports present a basic fleet overview with general performance indicators (e.g. fuel consumption and CO₂ emissions), trends and deviations.

Since the reports do not track individual drivers but rather individual vehicles, this service is particularly suitable for smaller fleets.

Trends are indicated with arrows: green for improvement and red for deterioration.

You can also access the Scania Fleet Management portal to manage your service planning.

Benefits

- Easy to use
- No prior knowledge necessary
- View trends since last report
- Quick overview of your fleet
- Access to Service Planning through the Scania Fleet Management portal and App
- Add new service levels as required

Service Planning

Combine fault reports with planned maintenance and send as a work order to your workshop. Service Planning provides an overview of all the equipment in your fleet, along with their maintenance plans, including a calendar for keeping track of maintenance and repairs.

With the free Scania Fleet Management App you get access to the fault reporting function and your drivers can instantly report problems and supply photographs directly from the site of the incident.

Fault reports are also automatically reported from the vehicle.

SCANIA FLEET MANAGEMENT APP



With the **Monitoring Package**, you will receive reports and get access to the Scania Fleet Management portal

Change in fuel consumption

See at a glance how your entire fleet is performing on fuel consumption. Are things better this week?

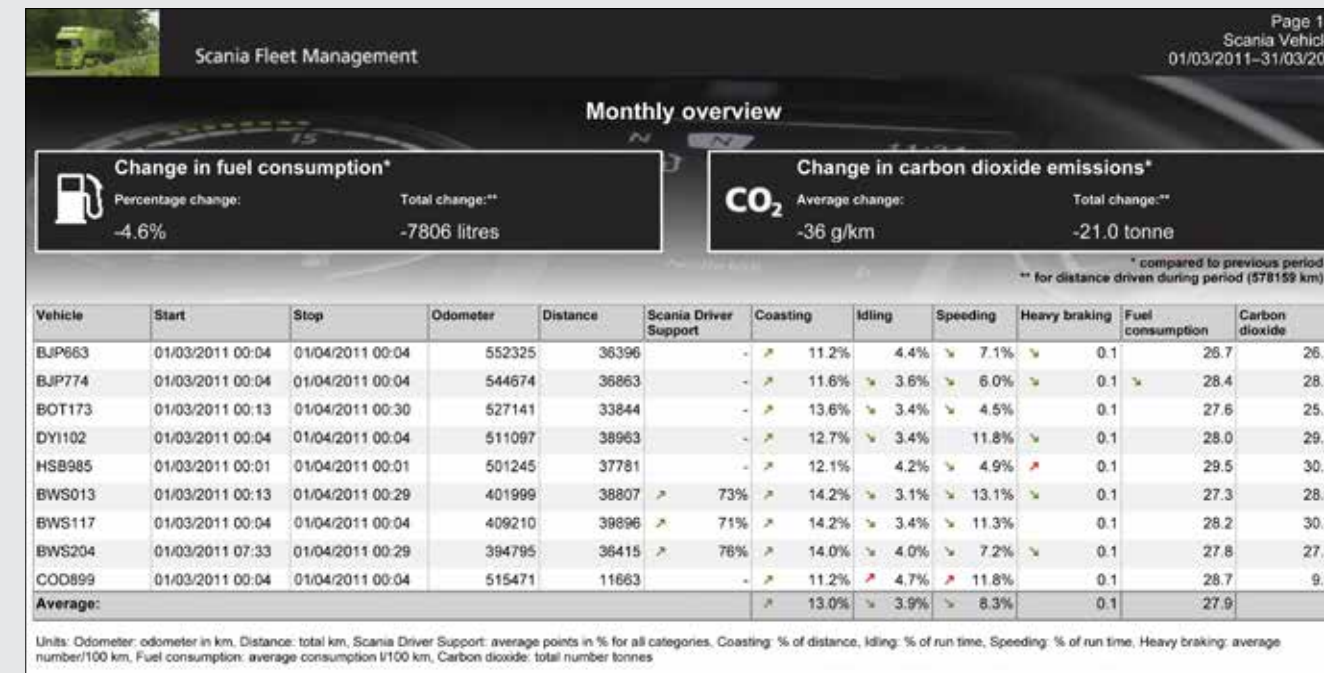
CO₂ emissions

Show your customers what you're doing for the environment – in black and white – and become eligible for additional transport assignments.

Red and green arrows

Spot trends since the last report. Are some trucks improving? Green tells you when a factor affecting fuel consumption is improving. Red indicates a negative trend.

THE MONITORING REPORT



Scania Driver Support

If your vehicle is equipped with Scania Driver Support, you'll see the average score of the coaching system here.

Speeding

High speed consumes more fuel than necessary. You can set a speed limit and follow it up (83 km/h is preset).

Coasting

Driving with a gear engaged and without fuel injection is good driving behaviour.

Heavy braking

Excessive braking might indicate a need for a new driving strategy that is less aggressive.

Idling

Excessive idling time wastes fuel. Can you coach drivers or adjust routes to reduce idling time?

Fuel consumption

Find the fuel-guzzlers that need attention.

SERVICE PLANNING — VIA FLEET MANAGEMENT PORTAL



The calendar gives you an overview of upcoming services.

The repair is saved and visualized together with planned maintenance in the calendar.

The service specifications are sent to the workshop directly from the Scania Fleet Management portal.

STILL LOOKING FOR ADDITIONAL FEATURES?

If you need information on individual drivers, map support, environmental reports or more – just turn the page and read on.



Monitoring Package

Full fleet data on all your vehicles

CONTROL PACKAGE

For efficient planning and location support

The Control Package is an advanced set of services suitable for fleet owners who want to utilise the benefits of vehicle and driver follow-up but who also want to support their transport process with operational information.

As is the case with the Monitoring Package, the Control Package allows access to our App, the Scania Fleet Management portal on any computer and all the information offered through the Monitoring Package. You can also access a large amount of other useful information and functions, including the following:

- **Traffic light report** – reviews results and trends on both a driver and vehicle level, comparing with target values over a specified period and offering deeper analysis of trends through charts or diagrams.
- **Fuel report** – provides an overview of fuelling events such as when and where refuelling occurred, which driver carried it out and how much the fuel level changed. This function is designed to simplify the reviewing of fuel bills and detection of unusual fuelling patterns.
- **Exceptions report** – provides a list of occurred exceptions in the fleet. An exception is an event that deviates from normal practice.
- **Fleet position** – shows the fleet's current positions, vehicle status (on/off, moving direction), driver activity (driving, resting, other work etc.) and accumulated driving time.
- **Vehicle tracking** – shows positions of a selected vehicle over a given time period.
- **Geofence** – triggers an alarm if a vehicle enters or leaves a predetermined geographical zone. This can be useful for knowing exactly when a vehicle is approaching a depot or to prevent unauthorised driving.
- **Environmental report** – reviews the emissions caused by a specific vehicle during a selected period.

Benefits:

- Easy to use
- Access through the Scania Fleet Management portal and App
- Spot deviations in vehicle and driver performance
- Follow performance trends
- Compare vehicles and drivers
- Plan for driver coaching or training
- Exception reports
- Plan service according to how your fleet runs
- Map functionality
- Vehicle tracking
- Geofencing
- Accumulated driving time information

With the Control Package, you can stay on top of your fleet – wherever it is, and wherever it's heading.

For a demonstration of Scania Fleet Management and how it can enhance your fleet operations and save you money, give your local Scania dealer a call.

More frequent data reporting

The Control Package is particularly effective for fleet owners who need the most up to date vehicle information available at all times.

In its latest form, the package supplies data at standard ten minute intervals but can also be configured to do so at one minute intervals if required. This feature increases fleet overview and contributes to improved operational efficiency.

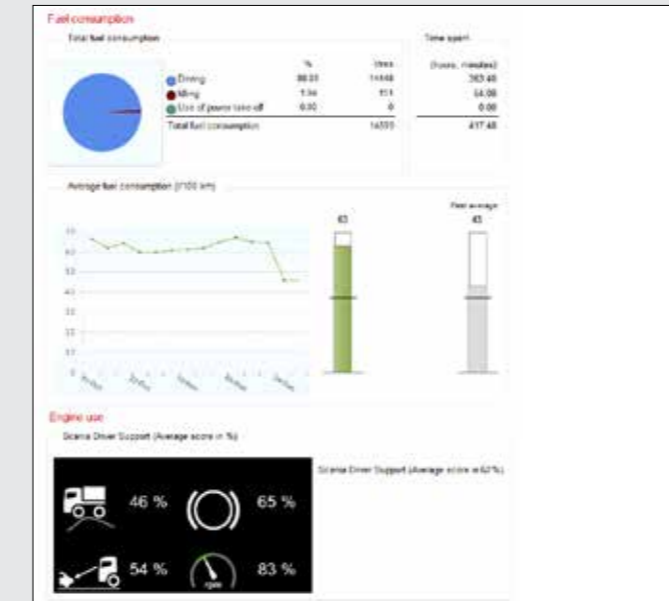
TRAFFIC LIGHT REPORT

Green indicates **no deviations** from set target values. Yellow indicates **minor deviations** from set target values. Red indicates **serious deviations** from set target values.

View your entire fleet as a list, or click on vehicle or driver to see additional details.

Standard categories related to fuel consumption.

Details about how the vehicle is driven, such as speeding and braking.



With a Scania vehicle you get Scania Driver Support data.

Pick a vehicle or driver in your fleet and view a set period, or choose your own dates.

See how much of the time the vehicle is being driven, idling or running a PTO.

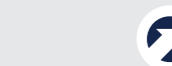
Spot trends in data down to the smallest unit when it comes to fuel consumption, because details matter.

EXCEPTIONS REPORT

Often the details that matter are the deviations from the normal.

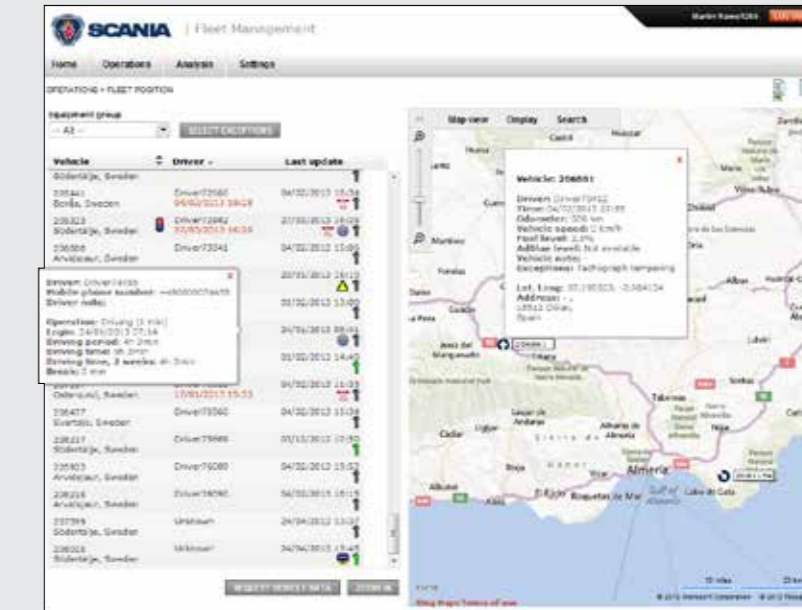
With the exceptions report you are quickly given the details that need your attention.

Detailed driver information and accumulated driving time helps you plan pickups and deliveries.



The vehicle direction is shown by an arrow.

FLEET POSITION DETAILS



If a vehicle has entered or left a preset area, you can be alerted by Geofence.

You can see warnings and exceptions for a number of different events.



Control Package

Connecting data on vehicles and drivers to map location in real time

Scania Fleet Management – Technical Summary

What do the services offer?	Monitoring	Control	Messaging
Fuel consumption reports and trends by email	•	•	
CO ₂ emission reports and trends by email	•	•	
Service planning based on time, distance or both	•	•	
Exceptions report		•	
Environmental report – all emissions		•	
Performance trends per driver or vehicle: fuel consumption, driving style and usage during any period		•	
Traffic light report comparing results with your preset values		•	
Fleet position and status report		•	
Driving time report with accumulated driving time for drivers*		•	
Vehicle tracking over a chosen period		•	
Geofence alarms if a vehicle enters or leaves a predetermined area		•	
Quick and easy communication across your workforce			•
Traceability and secure storage of historical communication			•

Requirements:

- Communicator unit installed in vehicle.
- Email address for automatic reports.
- Computer and internet access for Scania Fleet Management Portal.
- Package subscription.
- Tablet or Smartphone (iOS or Android) with Internet connection for Scania Fleet Management App.

* Requires at least Scania Communicator (2.0) and a European digital tachograph supporting driving time information.

