

Irizar i6



Solidity and Growth

Throughout the company's history, Irizar has always responded to clients' different needs, continuously improving the safety, reliability, comfort and profitability of its products, and offering clients the best service possible - for more than 125 years.

Today it is a world-leading business in the road passenger transport sector, and has a growing presence in the electronics, communications and rotating electrical machinery sectors. It is a global company with over 2,500 employees, production

plants in five countries, a sales presence in more than 90 countries across five continents and its own industry leading research and development technology centre.

Irizar continues to grow, diversify and look to the future - a future where technology, electronics, telecommunications, innovation, environmental and social sustainability, diversity and mobility develop and improve in close co-operation with its employees, clients and partners.







A focus on safety

The safety of everyone who travels in our coaches is Irizar's top priority.

That is the reason why the company invests heavily and collaborates with the most prestigious engineering companies in order to identify and integrate the most advanced safety technologies and anticipate and exceed future regulations, for both drivers and passengers.

Brilliant reliability

All Irizar coaches have been designed with absolute reliability in mind, making our range robust and dependable for all operators.

Irizar incorporates the most advanced production components and materials in its vehicles. With major use of automation and customisation in the manufacturing process, its new coaches have been subjected to the most demanding tests the passenger transport industry can devise, from independent institutes and engineering firms of recognised prestige, with peerless performance and results.





Arplus[®]
IDIADA





Service: the Irizar difference 24h/365d, 12 languages

Service is a fundamental belief at Irizar and we work hard to build and develop our clients' trust.

Irizar's service is based on customised attention that begins when clients define and configure their coach according to their needs. And from then on our clients are backed up by an expert team who will accompany them throughout the entire life of the vehicle.

The Irizar brand is a service guarantee that offers clients a comprehensive service for repairs, tune-ups and maintenance with a full guarantee, as well as modern logistics centres that handle orders for replacements and the supply of all the necessary parts to anywhere in the world in the shortest time possible.



Client profitability

Irizar's coaches allow operators to maximise profit based on minimizing fuel consumption, and making the vehicles simple and quick to maintain. We achieve this by designing our coaches with absolute attention to ensuring optimum aerodynamics and weight distribution, and providing maximum accessibility to parts to allow operators to keep their fleet on the roads in revenue earning service.

*Irizar guarantees coverage and
maximum resale value*



A state-of-the-art coach

The Irizar i6 is a versatile high-end coach ideal for commuter and touring services.

It stands out because of its features, design, aerodynamics, attention to details and comfort.

Irizar's identifying symbols make it unmistakable as a safe, reliable and profitable coach.

Driving it is a special experience, and travelling in it is a true pleasure.







A perfect binomial

The structure of the Irizar i6 has been designed by taking into consideration the vehicles resistance to frontal collision and roll-overs, complying with the future R66.01 safety regulation.

The structural strength and torsional rigidity have been improved, as well as the load and weight distribution providing greater driving stability.

It offers a spacious and ergonomic driving position with integrated dashboard screen for all driver's functions.



*Maximum visibility
with state-of-the-art
technology:*

Front and rear LED lighting technology with daytime headlamps and curve-following lamps.

Exclusive Irizar rear-view mirrors that comply with all European standards (including school services) with only two panes.

Additionally, the Irizar i6 includes the following reliability improvements:

- Energy saving and strong pultrusion technology in side panels. Clean and straight exterior lines.
- Robust door opening systems.
- New luggage door opening mechanism.
- Spacious and robust aluminium luggage racks.
- LED technology lights for the exterior and interior (ceiling and aisle) of the coach.
- Light luggage compartment covers equipped with door check systems and fitted with SMC materials.
- Stainless steel aisle floor register covers to access the engine area.
- Optimal climate control equipment.



A customised coach

The Irizar i6 has a massive ability to be adapted, allowing clients to configure the coach and other equipment options according to their specifications to fit their needs.

Options include a wide range of finishes and various seat upholsteries, as well as a long list of on-board entertainment which includes Wi-Fi system, iPod connection, monitors integrated

into the seats, individual audio, navigation and surveillance systems, and a number of catering options. Further upgrades include access for disabled people, fire extinguishing equipment, air purifier and much more.

Irizar is positioned on the cutting edge to offer its customers the latest technologies adapted to coaches.







The true pleasure of travelling

The Irizar i6's interior design offers a pleasant environment and a feeling of spaciousness for the well-being of the driver and passengers.

The coach interior aims at maximum comfort:

- Seats exclusively designed for Irizar. They stand out because of their design, ergonomics, durability, accessibility and weight optimisation.
- Dual zone climate system that adapts to the needs of the driver and passengers.
- A more quiet coach with a new engine area insulation system.
- Interior lighting with LED technology, tactile switches in diffusers for reading and to request the stewardess, stops, and seat numbers.
- Flat screen monitors.
- Optimal HVAC performance.



Optionals

Game tables



Exterior awning



Toilet



Wi-Fi



Sat Nav



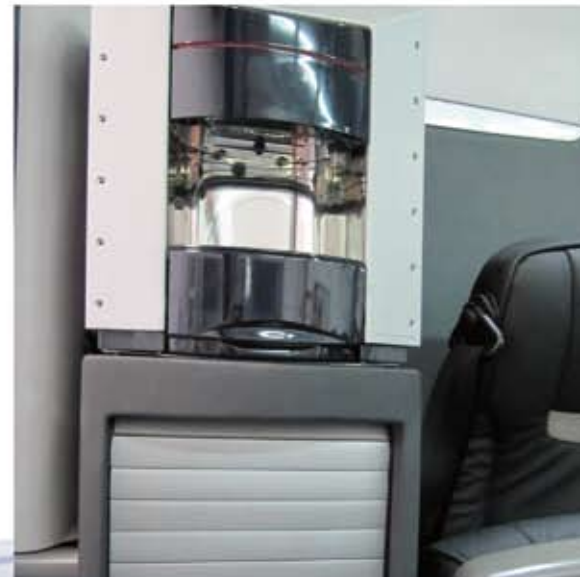
Individual sound



220v power sockets



Coffee maker



Third monitor



Water dispenser



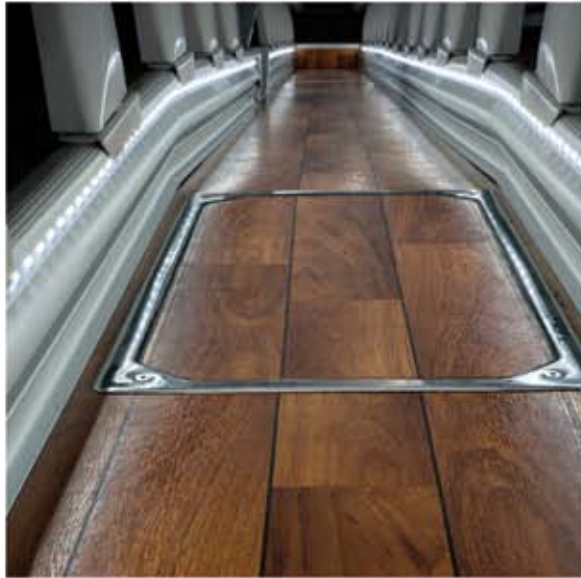
Microphone integrated in driver's seat



Kitchen



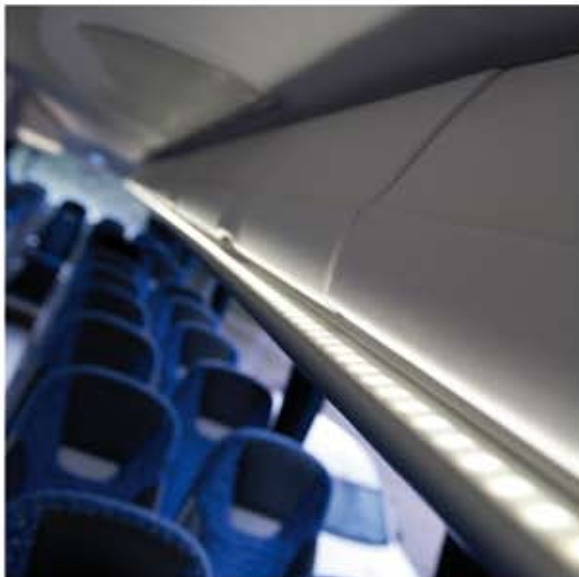
Wooden effect floor lino



Magic Eye - Driver assistance system



Aircraft type luggage racks



Individual monitors



Other possibilities

- Destination signs
- iPod connection
- Digital clock
- Aluminium protection profiles in luggage floor
- Hispacold eco3 air purifier
- LEDs on rear bumper
- Circuit breakers
- Antisiphon device
- Luggage compartment dividers
- Stainless steel structure
- Reversing camera
- Guide camera
- Road camera
- Central/Rear stairs camera
- Coach washing system
- Smoke alarm in toilet
- Fire suppression system
- CCTV
- Sensitive edge in luggage compartment covers
- Reversing sensors
- Emergency mirror in luggage compartment
- Independent climate system for driver and passengers
- LED reading lights
- Aisle LED lighting
- Luggage rack
- Sliding battery holder
- Vacuum cleaner
- First aid kit
- Alcolock
- Etc.



Zumarraga bidea, 8
20216 Ormaiztegi (Gipuzkoa) Spain
T +34 943 80 91 00 | **F** +34 943 88 91 01
irizar@irizar.com | www.irizar.com