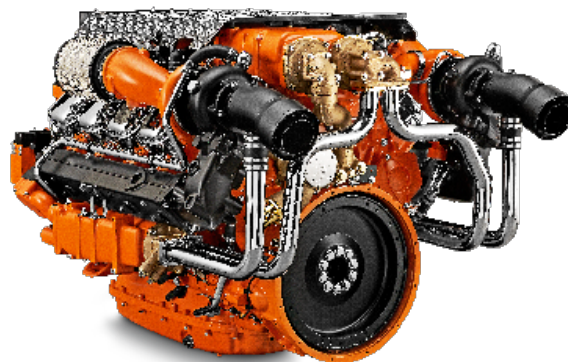




## Engine range

### 16-litre engines

|  |  |
|--|--|
| Configuration  | V8   |
| Displacement   | 16.4 litres  |
| Fuel injection control   | Scania EMS and PDE unit injectors or Scania XPI  |
| Output range propulsion<br>- with PDE unit injectors           | 221-552 kW (300-750 hp), ICFN<br>478-588 kW (650-800 hp), IFN<br>588-662 kW (800-900 hp), Patrol craft long<br>625-736 kW (850-1,000 hp), Patrol craft short |
| - with Scania XPI (extra high pressure injection, common rail) | 662 kW (900 hp), IFN<br>736-809 kW (1,000-1,100 hp), Patrol craft long<br>846 kW (1,150 hp), Patrol craft short  |
| Output range auxiliary   | 430-640 kW, PRP  |



### 13-litre engines

|                         |  |
|-------------------------|--|
| Configuration           | 6 in-line  |
| Displacement            | 12.7 litres  |
| Fuel injection control  | Scania EMS and PDE unit injectors  |
| Output range propulsion | 162-405 kW (220-550 hp), ICFN<br>331-441 kW (450-600 hp), IFN<br>441-515 kW (600-700 hp), Patrol craft long<br>496-551 kW (675-750 hp), Patrol craft short |
| Output range auxiliary  | 269-426 kW, PRP  |



### 9-litre engines

|                         |   |
|-------------------------|---|
| Configuration           | 5 in-line   |
| Displacement            | 9.3 litres  |
| Fuel injection control  | Scania EMS and PDE unit injectors                             |
| Output range propulsion | 162-257 kW (220-350 hp), ICFN<br>221-294 kW (300-400 hp), IFN |
| Output range auxiliary  | 199-323 kW, PRP   |



\* Please check the technical specification sheets for each engine on [www.scania.com](http://www.scania.com) to get more detailed information e.g. about equipment, basic engine and performance data, emission certificates.





## SCANIA MARINE ENGINES

ICFN: Rated power available 1 h/1 h. Unlimited h/year service time at a load factor of 100 %.

IFN: Intended for intermittent use where rated power is available 1 hour/3 hours period. Accumulated load factor must not exceed 80% of rated power. Unlimited h/year service time.

Patrolcraft long: Intended for intermittent use where rated power is available 1 hour/6 hours period. Between full load operations engine rpm must be reduced at least 10% from max. obtained rpm. Accumulated total service time max. 2000 h/year.

Patrolcraft short: Intended for intermittent use where rated power is available 1 hour/12 hours period. Between full load operations engine rpm must be reduced at least 10% from max. obtained rpm. Accumulated total service time max. 1200 h/year.

PRP-Prime power: For continuous operation and unlimited yearly operation at varying load. Max. mean load factor of 70 % of rated power over 24 h of operation. 1 hour/12 hours period of accumulated peak overload to 110 %.