

# 2021 PARTS SOLUTIONS



**12**  
MONTHS  
UNLIMITED KM  
WARRANTY

**SCANIA**

# INTRODUCTION





# WELCOME TO THE LATEST EDITION OF SCANIA PARTS SOLUTIONS.

Scania's genuine replacement parts are more affordable than you think.

Scania recommends using only genuine replacement parts to keep your Scania truck or bus on the road for longer, reducing the potential for an unplanned stop.

Scania parts give you complete peace-of-mind on pricing, performance and uptime.

## WHAT IS SERVICE EXCHANGE?

Re-engineered to the original specification with excellent availability and backed by a full Scania warranty plus the comprehensive international operator support service of Scania Assistance. Every Scania Service Exchange part is of the same high quality as a brand new Scania part, because we recycle those components that have retained their original build-quality and replace those that haven't.

## CONTENTS

Brakes	4
Gearbox	10
Engine	12
Driveline	14
Electrical	16
Cooling System	18
Cab & Body Parts	20
Filter / Consumables	24
Suspension	28
Clutch	32
Steering	34
Preventative Maintenance Guide	37
Scania Support Network	42
Terms and Conditions	43

## *i* KEY

### NTG

New Truck  
Generation

### PGR

PGR Series

### 4T/B/C

4 Series Truck  
4 Series Bus  
4 Series Coach

### 3T/B/C

3 Series Truck  
3 Series Bus  
3 Series Coach

### FKN

FKN Series

### I&M

Industrial &  
Marine

# BRAKES







## BRAKE DISC

4TB, PGR, FKN, NTG  
Not ZF rear axle

1889543

**\$299** EACH

### **i** BRAKE DISC

Scania high strength brake discs are renowned for their excellent cooling properties. They can withstand up to 900°C, which means a longer life and less risk of brake fade, giving you highly reliable braking and increased driving safety.



## BRAKE PAD KIT

4TB, PGR, FKN, NTG  
CITY Bus

2325212

2325213

**\$259** EACH

### **i** BRAKE PAD KIT

How long your brakes last and how well they function depends on where and how you drive. Scania brake pads are carefully tuned to Scania brake discs. It's a combination that optimises brake functions and reliability, giving you long-lasting safety on the road.

# BRAKES



## BRAKE DRUM

3TB, 4TB, PGR, NTG (7 Inch)

1414152

3TB, 4TB, PGR, NTG (8 Inch)

2378715

**\$269** EACH

### **i** BRAKE DRUM

Scania high-strength, cast iron brake drums are renowned for keeping their shape and can deter cracking. They will withstand very high temperatures, which guarantees a longer life and less risk of brake fade, giving you reliable braking and increased driver safety.



## AIR DRYER PROTECTION FILTER

4TB, PGR, FKN, NTG

2562323

**\$59** EACH

### **i** AIR DRYER PROTECTION FILTER

Scania air dryer filters stop up to 99.95% of all particles from reaching the air filter cartridge.



### **BRAKE CALIPER**

NTG	2475272
NTG	2475273



### **SOLENOID VALVE**

3TB, 4TB, PGR, FKN	2038653
3B, 4TB, PGR, FKN, NTG	2038655



### **AIR COMPRESSOR**

SERVICE EXCHANGE	
4TB, PGR, FKN, I&M (600cc)	0579321

(Excl. Core Charge)

**\$1,199** EACH

**\$199** EACH

**\$999<sup>#</sup>** EACH

# BRAKES



## SLACK ADJUSTER

Drum Brake Self Adjusting	
3T, 4TB, PGR, FKN, NTG, LH	1789568
3T, 4TB, PGR, FKN, NTG RH	1789567
Drum Brake Rear Axle Self Adjusting	
3TB, 4TB, PGR, FKN LH	2009819
3TB, 4TB, PGR, FKN RH	2009820

**\$399** EACH



## WHEEL SPEED SENSOR KIT

<b>\$349 each</b>	1892051
3TB, 4T, PGR, NTG, ANGLED - L = 1500MM	
<b>\$349 each</b>	1892057
4T, PGR, NTG, STRAIGHT - L = 1650MM	
<b>\$449 each</b>	1892058
4T, PGR, NTG, STRAIGHT - L = 2675MM	
<b>\$449 each</b>	1892059
4T, PGR, STRAIGHT - L = 3400MM	

FROM **\$349**



## PARKING BRAKE VALVE

PGR, FKN	1882111
For vehicles without trailer brakes and interlock valve. Parking brake without check position.	

**\$399** EACH





### **APS UNIT**

SERVICE EXCHANGE

PGR, FKN

0573715



### **BRAKE CHAMBER**

**\$699 each**

3TB, 4TB, PGR

1446037

**\$799 each**

4TB, PGR, FKN, Type

2147775

24/30 Disc Brake



### **ABS CONTROL VALVE**

3B, 4TB, PGR, FKN, NTG

1453761

(Excl. Core Charge)

**\$1,899<sup>#</sup> EACH**

**FROM \$699**

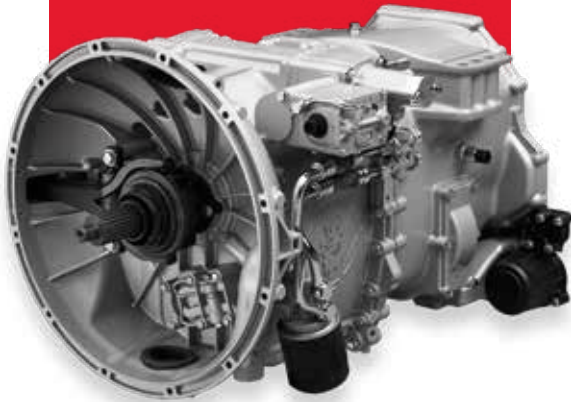
**\$399 EACH**

# GEARBOX





**FULLY FITTED**



## GEARBOX

SERVICE EXCHANGE

PGR + 4 Series  
GRS0905 gearbox

05008151

(Excl. Core Charge and Range Unit)

**FITTED  
FROM \$14,999<sup>#</sup>**



## GEARBOX MOUNTS

**\$499 each**

4T, PGR, FKN

1921972

**\$1,299 each**

NTG

2592761

NTG

2592762

**FROM \$499**

# ENGINE



## TURBO CHARGER

REPLACEMENT (PGR + 4 SERIES)

SERVICE EXCHANGE

Includes oil & filter change

**\$999 each**

9,11, 12L PDE/HPI

0572771

**\$1,499 each**

9,11, 12L PDE/HPI

0570162

**\$1,499 each**

9,11, 12L PDE/HPI

0571618

**\$1,599 each**

9,11, 12L PDE/HPI

0572752

**\$1,899 each**

DT12

0572751

**\$2,199 each**

H/Duty 9,11, 12L PDE/HPI

0572897

**\$2,699 each**

DC16 PDE

0576166

**\$2,699 each**

DC16 PDE

0576167

**\$2,699 each**

DC16 PDE

0576168

**\$5,699 each**

9, 13L XPI

0576161

**\$6,299 each**

13L PDE

0576199

**\$5,999 each**

9, 13L XPI

0576162

**\$5,999 each**

H/Duty 9, 13L XPI

0576164

(Excl. Core Charge)

FROM **\$999<sup>#</sup>**



## INJECTORS

REPLACEMENT (PGR + 4 SERIES)  
SERVICE EXCHANGE

Unit Injector (PDE)	\$899 each
4TB, PGR – DC11, DC12, DC16	0574393
4TB, PGR – DC12, DC16	0574394
I&M – DC16	0579255
4TB – DC11, DSC12	0574380
4TB – DC12, DC16	0574381
PGR – D16	0574862
4TB – DC11, DC12, DC16	0574382
I&M – DI12, DC9, DC12, DI16	0579254
PGR, FKN – D9	0579272

Unit Injector (HPI Engines)	\$899 each
PGR, FKN - DC12, DT12	0579263
4T, PGR, FKN – DC12	0579261
PGR, FKN	0579262
Unit Injector (XPI Engines)	\$899 each
PGR, FKN, I&M – D12, DC9	0575177
PGR, FKN – D9, D13	0575176
Feed Pump (XPI)	\$3,499 each
PGR, FKN, I&M, NTG	0572710

(Excl. Core Charge)

FROM **\$899<sup>#</sup>**



## ENGINE MOUNTS

4TB, PGR	1475868
4TB, PGR,	1778532

**\$125** EACH



## NOX SENSOR

2294290, 2294291, 2609535, 2609536

For New Truck Generation models only

**\$999** EACH



# DRIVELINE



## **CENTRE BEARING ASSEMBLY**

4TB, PGR, FKN

2559861

Supporting bearing assembly maintenance-free

**\$259** EACH



## UNI JOINT

**\$195 each**

3TB, 4T, NTG, P400

2397361

3T, 4T, NTG, P500

2397362

**\$225 each**

3T, 4T, PGR, NTG

1879541

P600

FROM **\$195**



## WHEEL BEARING

4TB, PGR, FKN, NTG

2310169

Front Axle Cassette Bearing

**\$499** EACH



## DRIVE AXLE HUB SEAL KIT

4TB, PGR, FKN

0550905

AD90 & ADA90 Hubs

**\$139** EACH

# ELECTRICAL





## STARTER MOTOR

SERVICE EXCHANGE

**\$599<sup>#</sup> each**

3TB, 4T, I&M, D9, 1-pole

0571420

**\$999<sup>#</sup> each**

4TB, I&M D12, 1-pole

0571168

PGR, I&M D16, NTG

0573175

4TB, PGR, I&M, D9, D11, D12, D13, NTG

0573548

(Excl. Core Charge)

**FROM \$599<sup>#</sup>**

## **i** STARTER MOTOR

Ensure your truck will start even in the coldest weather by choosing a Scania service exchange starter motor. A Scania service exchange unit will give you many safe starts over an extended life span.



## ALTERNATOR

SERVICE EXCHANGE

PGR, I&M , NTG (100A)

0570887

4TB, PGR, FKN, I&M (100A)

0570884

4T, PGR, I&M 1 pole (100A)

0570879

(Excl. Core Charge)

**\$899<sup>#</sup> EACH**

## **i** ALTERNATORS

Scania have a wide range of alternators available to you that support both original and additional equipment fitted to your Scania.



# COOLING SYSTEM



## **WATER PUMPS**

SERVICE EXCHANGE

### **\$449# each**

4TB, I&M, D9 only

0570961

4TB, PGR, I&M, D9, D11, D12

0570962

4TB, PGR, I&M, D9, D11, D12

0570965

### **\$599# each**

4T, PGR, I&M, D16 only

0570881

(Excl. Core Charge)

**FROM \$449#**





## THERMOSTAT

**\$69 each**

4T, PGR, I&M  
75/80°C Double

0550275

**\$139 each**

4T, PGR, I&M  
75/80°C Double  
4T, PGR, FKN  
80/87°C double external mounting  
4TB, PGR, FKN, I&M  
80/87°C double block mounted

1745449

1849060

1916620

## RADIATORS

4TB, I&M P-Cab, 0,60m<sup>2</sup>  
PGR CP Cab Only  
4T, I&M CR-/CT-Cab 0.81m<sup>2</sup>  
16 Litre I&M  
PGR, FKN CR/CT Cab –  
K-Chassis Coach  
FKN

1516491

1769999

1764886

1769997

1798689

## FAN

Suits various models

1:1

1.25:1

1:1

1:1

1412398

2035611

2035612

2052007

**FROM \$69**

**\$1,099 EACH**

**\$1,599 EACH**

# CAB & BODY PARTS





### LED HEADLAMP

Left hand side

2655850

Right hand side

2655851

For New Truck Generation models only

**\$1,299** EACH



### H7 HEADLAMP

Left hand side

2655844

Right hand side

2655845

For New Truck Generation models only

**\$799** EACH

# CAB & BODY PARTS



## REAR LAMP CLUSTER

PGR, NTG, Left hand side	2380955
PGR, NTG, Right hand side	2380953

**\$399** EACH



## WINDSCREEN

Tinted - with no sensors	2116382
Untinted - with rain & headlight sensors	2439525
Tinted - with rain & headlight sensors	2439527

**For New Truck Generation models only**

**\$699** EACH



### CAB LEVELLING VALVE

4T, PGR

1430545

**\$125** EACH



### CAB ANTI ROLL BAR BUSH

**\$29 each**

4T, PGT, Up to March 2005

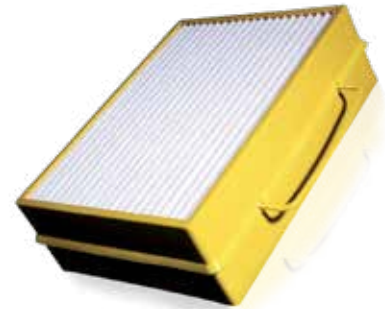
2157762

**\$45 each**

4T, PGT, From April 2005

2250372

**FROM \$29**



### CAB AIR FILTER

PGR

1913500

4TB, PGR, FKN

1913503

**\$35** EACH

### **i** CAB AIR FILTER

Your cab air filter helps trap dirt, dust, pollen and exhaust gases that may find their way into the ventilation system, making the interior of your cab a healthier, safer place.



# FILTER / CONSUMABLES





## TRANSMISSION OIL FILTER

3TB, 4TB, PGR, FKN, NTG  
Not ZF/Allison

2002705

**\$49 EACH**

## **i** FILTER

Scania's filters feature uniform density fine particle filters to prevent clogging, protecting your precision-tolerance Scania engine and avoiding increased fuel consumption and excessive engine wear.



## AIR FILTER

**\$109 each**

4T, PGR, Non Fire Retardant 13m<sup>2</sup>  
Air Cleaner

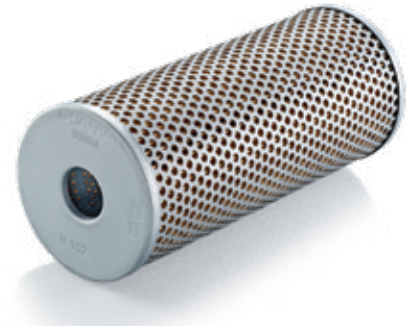
1869993

**\$125 each**

4T, PGR, Fire Retardant 13m<sup>2</sup>  
Air Cleaner

1869995

**FROM \$109**



## FILTER ELEMENT

PGR, FKN, I&M Hydraulic  
Oil Filter

1733658

**\$65 EACH**

# FILTER / CONSUMABLES



## MAINTENANCE KITS

**\$79 each**

4B PGR, FKN (Small Maintenance Kit – PDE)

2189413

**\$89 each**

4T, PGR, FKN (Small Maintenance Kit – HPI)

2189409

**\$139 each**

PGR, FKN (Small Maintenance Kit – XPI)

2189423

**\$299 each**

4T, PGR (Large Maintenance Kit – HPI)

2189420

**FROM \$79**



## OIL FILTER

**\$29 each**

2059778

**\$39 each**

2625884

**\$49 each**

2002705

**FROM \$29**

## *i* OIL FILTER

Scania oil filters are designed to reduce the wear and tear on your engine. They resist engine vibration. This makes for reduced repair and maintenance costs.



## FUEL FILTER

**\$29 each**

4TB, PGR, FKN, I&M (PDE), NTG 1873018

**\$35 each**

4T, PGR, FKN (HPI) 1873016

**FROM \$29**

## **i** FUEL FILTER

Cheaper, inferior filters can lead to lower vehicle efficiency and could result in expensive damage to major components on your vehicle.



## 10 LITRE ADBLUE “HANDY PACK”

ADBLUE10

**\$18.<sup>99</sup> EACH**



## SCANIA COOLANT

**5 Litres - \$29**

3TB, 4TB, PGR, FKN, P96, I&M

1921955

**20 Litres - \$109**

3TB, 4TB, PGR, FKN, P96, I&M

1921956

**205 Litres - \$999**

3TB, 4TB, PGR, FKN, P96, I&M

1921957

**FROM \$29**

# SUSPENSION







### SPRING BOLT

3TB, 4TB, PGR, FKN, Thread Diameter 28mm

2085822

3TB, 4TB, PGR, FKN, Thread Diameter 36mm

2097424

**\$125** EACH



### SHOCK ABSORBER KITS

PGR

2246142

PGR

2246155

**\$299** EACH

# SUSPENSION



## SUSPENSION AIRBAGS

<b>\$379 each</b> PGRT	1903608
<b>\$379 each</b> 4T, PRG, Rear Axle	1543691
<b>\$399 each</b> PRG, FKN, NTG, Rear Axle	2357460
<b>\$399 each</b> NTG, Front Axle	2373116
<b>\$399 each</b> 4T, PGR, NTG, Tag Axle	2517987
<b>\$499 each</b> 4B, FKN, Front Axle	2809671
<b>\$499 each</b> 4B, FKN, Rear Axle	2024290

FROM **\$379**



### TORQUE ROD BUSHES

**\$259 each**

4TB, PGR, FKN

1517403

**\$225 each**

3B, 4B, FKN

1435944



### BUSHING

3T, 4T, PGR, FKN

0128680

3T, 4T, PGR, FKN

0135036



### TRAILING ARM

4T, PGR, LH

1421060

4T, PGR, RH

1421061

FROM **\$225**

**\$119** EACH

**\$749** EACH

CLUTCH





## CLUTCH KIT

### SERVICE EXCHANGE

PGR, FKN (K432 38) <sup>#</sup>	0574914
PGR, FKN (K432 36) <sup>#</sup>	0574915
PGR, FKN (K432 27) <sup>#</sup>	0574916
PGR, FKN (K432 20) <sup>#</sup>	0574976
PGR, FKN, NTG (K432 48) <sup>#</sup>	0574978
PGR, FKN, NTG (K432 48) <sup>#</sup>	0574977
PGR, FKN (K432 37) <sup>#</sup>	0574981
4TB (K432 15/17/19) <sup>#</sup>	0572955

(Excl. Core Charge)

**\$1,699<sup>#</sup> EACH**



## CLUTCH MASTER CYLINDER

4TB, PGR, FKN

1513717

**\$825 EACH**



## CLUTCH SERVO

**\$499 each**

4TB, PGR, FKN

1754943

**\$899 each**

4TB

1522377

**FROM \$499**



# STEERING





## POWER STEERING BOX

SERVICE EXCHANGE

3T, 4T, PGR

(Excl. Core Charge)

0573181

**\$1,499<sup>#</sup>** EACH



## KING PIN KIT

4TB, PGR, FKN, NTG

Includes one king pin, bearings and shims

0550284

**\$299** EACH

# STEERING



## TRACK ROD

**\$699 each**

Axle type AM740D

2853196

**\$799 each**

Axle type AMA860

2853195

FROM **\$699**



## DRAGLINK

**\$599 each**

2636655

**\$899 each**

4T, PGR

2412629

FROM **\$599**



## TIE ROD ENDS

3TB, 4TB, PGR, FKM

1738380

3TB, 4TB, PGR, FKM, NTG

1914427

**\$125 EACH**



## **PREVENTATIVE MAINTENANCE GUIDES**

At Scania, we understand the importance of keeping your truck or bus on the road and minimising its time in the workshop. Scania understands that unscheduled maintenance and repairs add unwanted costs to operators. Scania has produced a list of some of the items we suggest be replaced or serviced as part of a preventative maintenance program that will maximise your fleet availability.



# PREVENTATIVE MAINTENANCE GUIDE

## OPERATION TYPE AND DESCRIPTION

### Operation Type 1 - Long distance transport

Typical Single Trailer long distance operation <45 tonnes

Idling and power take-off operation is less than 25% of the total operating time

Average speed is typically over 60 km/h

### Operation Type 2 - Heavy long distance transport up to 68 tonnes

Typical Bdouble long distance operation 45-68 tonnes

Like operation type 1, but with higher load on powertrain and chassis due to the higher gross weight or hilly topography

### Operation Type 3 - (Off-road) Construction operations

There are high or extremely high levels of the climate factors dust, dirt **AND**

Total idling and power take-off operation is more than 25% of the total operating time

### Operation Type 4 - Distribution

Total idling and power take-off operation is more than 25% of the total operating time **OR**

Traffic is extremely heavy, i.e. more than 250 stops or major decelerations per 100 km

Average speed is typically below 40 km/h

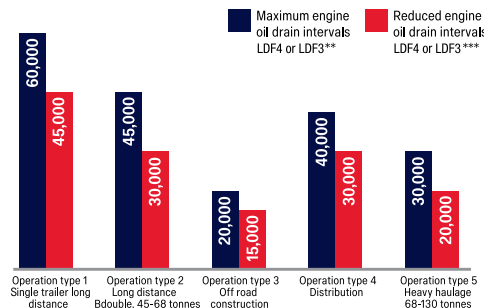
### Operation Type 5 - Heavy long distance 68-130 tonnes

Heavy operations long distance between 68-130 tonnes

Like operation type 2, but with higher load on powertrain and chassis due to the higher gross laden weight

**PLEASE NOTE:** Operation types are given as general applications. A regular analysis of the vehicles stored operational data will give an accurate determination of the vehicles application and service intervals.

## ENGINE OIL DRAIN INTERVAL FOR RECOMMENDED MAINTENANCE SEQUENCE SMSL



\*\* maximum engine oil drain intervals when loaded less than 60% of the time.

\*\*\* maximum engine oil drain interval when loaded more than 60% of the time.

For all NTG vehicles only LDF4 should be used.

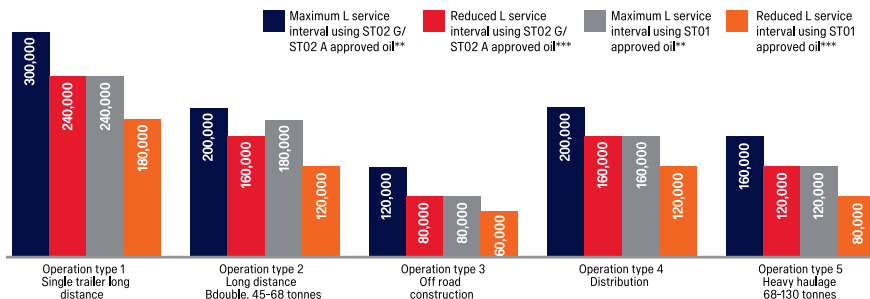
For PGRT V8 engines only LDF3 should be used.

For PGRT with Euro 6 inline engines only LDF4 should be used.  
730hp engines must run reduced oil drain intervals in all applications.

Oil drain interval recommendations are to suit Euro 4, 5 & 6 diesel engines.

Please contact Scania Australia for more information.  
(May Not Be Valid for all Scania Engine Types)

## RECOMMENDED AXLE AND GEARBOX OIL CHANGE INTERVALS FOR LPGRS^ AND PGRT



\*\* maximum L service interval when loaded less than 60% of the time.

\*\*\* maximum L service interval when loaded more than 60% of the time.  
Oil change intervals only apply to drive axles with filters.

\*For all NTG Axles and Gearboxes only ST02 A and STO G should be used.

Oil drain must be carried out at least once every 3 years if stated km for application type are not met.

For Automatic gearbox oil drain intervals follow instructions in the latest issue Workshop Manual 00:16-01.





## RECOMMENDED PREVENTATIVE MAINTENANCE SCHEDULE ALL P-G-R/L-P-G-R-S TRUCK

Area	Component	Action	Recommendation
Engine (V8 only)	Oil Cooler	Replace O rings and seals	480,000km, (7200 hrs)
Cooling system	Idler pulleys, belt & tensioners HPI/PDE engines	Replace	480,000km, (7200 hrs) or 2 years*
Cooling system	Idler pulleys, belts & tensioners XPI engines	Replace	240,000km, (3600hrs) or 2 years*
Cooling system	Water pump	Replace	600,000km, (9000hrs) or 4 years
Cooling system	Coolant	Replace	600,000km, (9000hrs) or 4 years
Cooling system	Radiator & Intercooler	External clean	Annually
Scania Gearbox	Shift / OPC cylinders	Replace O rings	750,000km, (11250hrs)
Hubs and Wheels	Drive/Tag axle wheel bearings	Clean and re-pack	600,000km (9000hrs)
Electrical	Batteries	Replace	2 years
Cab	Air Conditioning	Service	2 Years

## OPERATION TYPE 1 - LONG DISTANCE TRANSPORT

Area	Component	Action	Recommendation
Engine	Turbocharger (excluding VGT)	Replace	750,000km, (11250hrs)
Fuel & exhaust	Unit Injectors (PDE)	Service or replace	750,000km, (11250hrs)
Prop / Tail shaft	Universal joints	Replace	800,000km, (12000hrs)*
Brakes	Compressor	Replace	800,000km, (12000hrs)
Electrical	Starter motor	Replace	1,000,000km or 4 years

## OPERATION TYPE 2 - HEAVY LONG DISTANCE TRANSPORT UP TO 68 TONNES

Area	Component	Action	Recommendation
Engine	Turbocharger (excluding VGT)	Replace	600,000km, (9000hrs)
Fuel & exhaust	Unit Injectors (PDE)	Service or replace	600,000km, (9000hrs)
Prop / Tail shaft	Universal joints	Replace	750,000km, (11250hrs)*
Brakes	Compressor	Replace	800,000km, (12000hrs)
Electrical	Starter motor	Replace	1,000,000km or 4 years

## OPERATION TYPE 3 - (OFF-ROAD) CONSTRUCTION OPERATIONS, OPERATION TYPE 4 - DISTRIBUTION AND OPERATION TYPE 5 - HEAVY LONG DISTANCE 68-130 TONNES

Area	Component	Action	Recommendation
Engine	Turbocharger (excluding VGT)	Replace	500,000km, (7500hrs)
Fuel & exhaust	Unit Injectors (PDE)	Service or replace	500,000km, (7500hrs)
Prop / Tail shaft	Universal joints	Replace	500,000km, (7500hrs)*
Brakes	Compressor	Replace	700,000km, (10500hrs)
Electrical	Starter motor	Replace	4 years reduce to 3 years with Increased Duty Cycle

\* The condition of individual items should be assessed as part of a routine service program

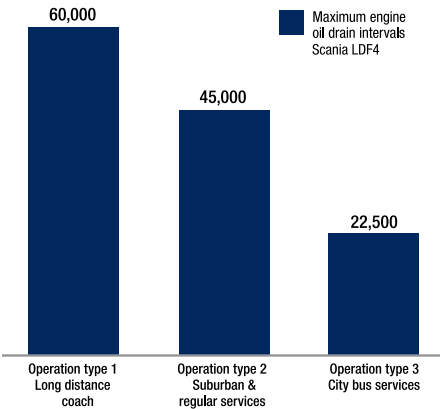
This document is a guide only and any recommendations are general for the listed applications. The estimated life of components is based on data collated from vehicles operating in Australian conditions. The driving style, travel route, vehicle weight and quality of maintenance will affect the estimated service life of each component. The estimated service life of components does not imply any warranty or costs to be accepted by Scania Australia, if the service life is not achieved.

# PREVENTATIVE MAINTENANCE GUIDE

OPERATION TYPE AND DESCRIPTION
<b>Operation Type 1 - Long Services</b>
Long distance services. For example a coach operating between major cities with fewer than 20 stops per 100km
Idle operation is less that 25% of total operating time
<b>Operation Type 2 - Suburban &amp; Regular Services</b>
Regular services between cities or towns including shorter chartered services with 20-50 stops or major deceleration per 100km
<b>Operation Type 3 - City Bus Services</b>
Regular city services with more than 50 stops or major deceleration per 100km

**PLEASE NOTE:** Operation types are given as general applications. A regular analysis of the vehicles stored operational data will give an accurate determination of the vehicles application and service intervals

ENGINE OIL DRAIN INTERVALS FOR RECOMMENDED MAINTENANCE SEQUENCE SMSL

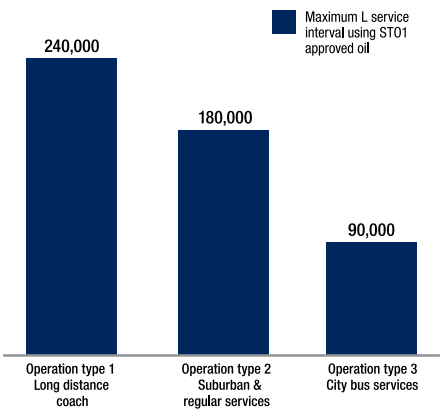


Engine oil drains intervals are considered as maximum. Only LDF4 should be used for Euro 6 KN vehicles. Engine oil drain intervals are considered as maximum for Euro 4, 5 and 6 engines.

Engine oil drain must be carried out at least once per year if stated km for application are not met.

Please contact Scania Australia for more information. (May Not Be Valid for all Scania Engine Types)

RECOMMENDED L SERVICE INTERVAL



Oil drains must be halved if gear oil is not ST01 approved.

Oil drain must be carried out at least once every 2 years if stated km for application type are not met.

For Automatic gearbox oil drain intervals follow instruction in the latest issue Workshop Manual 00:21-50

This document is a guide only and any recommendations are general for the listed applications. The estimated life of components is based on data collated from vehicles operating in Australian conditions. The driving style, travel route, vehicle weight and quality of maintenance will affect the estimated service life of each component. The estimated service life of components does not imply any warranty or costs to be accepted by Scania Australia, if the service life is not achieved.

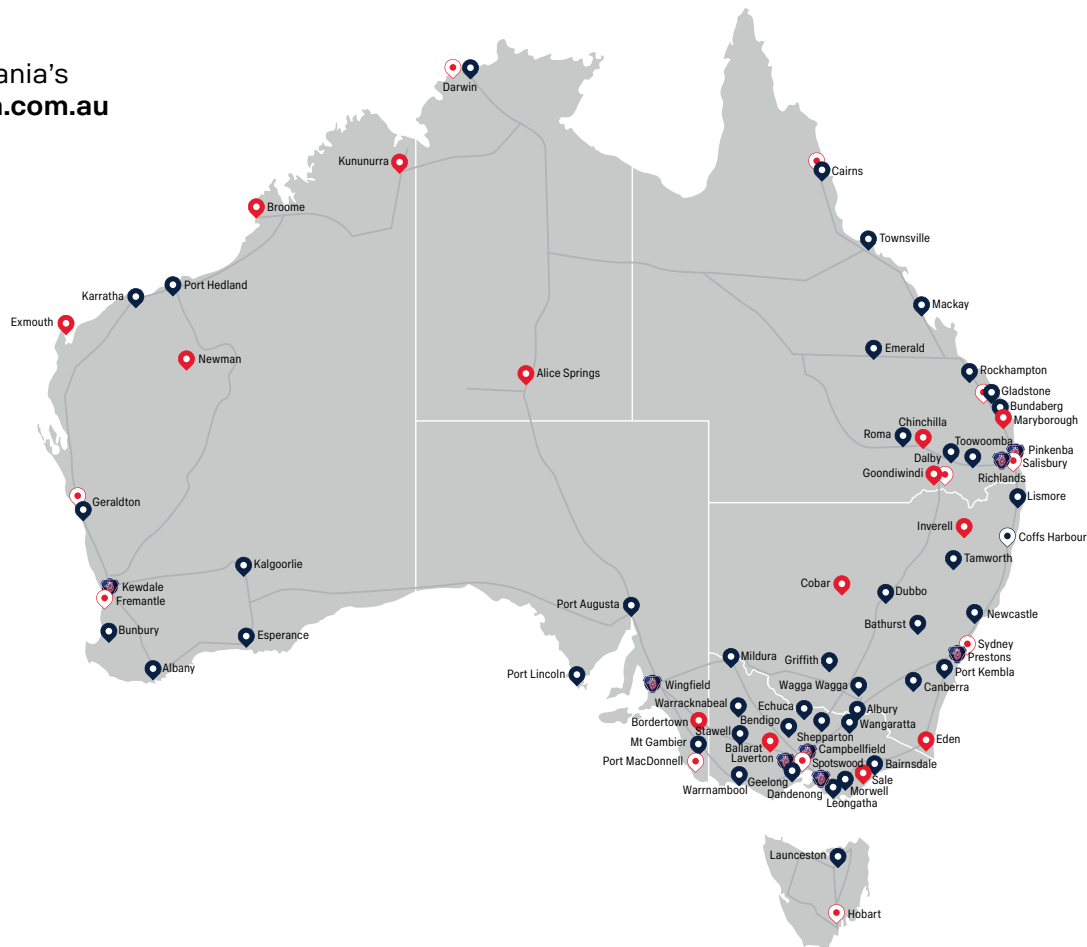
RECOMMENDED PREVENTATIVE MAINTENANCE SCHEDULE ALL K-N BUS			
Area	Component	Action	Recommendation
Cooling system	Water pump	Replace	600,000km or 4 years
Cooling system	Coolant	Replace	600,000km or 4 years
Cooling system	Radiator & Intercooler	External clean	Annually
Scania Gearbox	Shift / OPC cylinders	Replace O rings	750,000km
Hubs and Wheels	Drive/Tag axle wheel bearings	Clean and re-pack	600,000km
OPERATION TYPE 1 - LONG DISTANCE SERVICES			
Area	Component	Action	Recommendation
Engine	Turbocharger (excluding VGT)	Replace	900,000km
Cooling system	Idler pulleys, belts & tensioners	Replace	360,000km or 2 years*
Fuel & exhaust	Unit Injectors (PDE)	Service or Replace	600,000km
Prop / Tail shaft	Universal joints	Replace	750,000km*
Brakes	Compressor	Replace	700,000km
Electrical	Starter motor	Replace	600,000km

\* The condition of individual items should be assessed as part of a routine service program

OPERATION TYPE 2 - SUBURBAN & REGULAR SERVICES			
Area	Component	Action	Recommendation
Engine	Turbocharger (excluding VGT)	Replace	400,000km
Cooling system	Idler pulleys, belts & tensioners	Replace	180,000km or 2 years*
Fuel & exhaust	Unit Injectors (PDE)	Service or Replace	400,000km
Prop / Tail shaft	Universal joints	Replace	500,000km*
Brakes	Compressor	Replace	400,000km
Electrical	Starter motor	Replace	4 years
OPERATION TYPE 3 - CITY BUS SERVICES			
Area	Component	Action	Recommendation
Engine	Turbocharger (excluding VGT)	Replace	300,000km
Cooling system	Idler pulleys, belts & tensioners	Replace	180,000km or 2 years*
Fuel & exhaust	Unit Injectors (PDE)	Service or Replace	400,000km
Prop / Tail shaft	Universal joints	Replace	500,000km*
Brakes	Compressor	Replace	360,000km
Electrical	Starter motor	Replace	4 years
Body	Rubber bush for articulation attachment in articulated bus	Replace	400,000km
Body	Bush securing articulation bellows in frame	Replace	400,000km

# SCANIA SUPPORT NETWORK

For more information on Scania's  
dealer network go to **scania.com.au**



### Scania Owned Branch

**Scania Parts and Service Dealer**

## Scania Truck Selling Dealer



## Scania Engine Dealer



### Scania Emergency Repairer



## SCANIA ASSISTANCE

1300 722 642



## GENERAL TERMS & CONDITIONS

All prices include GST. Prices may change at any time without notice. All items subject to availability. # Offer price based on Genuine Scania Service Exchange product and subject to a core deposit. The images used in this publication represent the type of product available and may not look exactly like the product purchased. Vehicles may be specified with products other than those shown, so before purchasing the item you require please check with your local Scania parts department that it is the correct product for your vehicle type. All information is believed to be correct at time of going to print. However, Scania reserves the right to introduce, at any time, modifications or changes to detail as part of a policy of continuous improvement. Valid 01/01/2021 to 31/12/2021.

### Scania Genuine Parts Terms and Conditions

Our goods come with guarantees that cannot be excluded under the Australian Consumer Law. You are entitled to a replacement or refund for a major failure. You are also entitled to have the goods repaired or replaced if the goods fail to be of acceptable quality and the failure does not amount to a major failure. Subject to any such non-excludable rights and this express Warranty, all other terms, warranties, conditions, representations and undertakings (express or implied) which may lawfully be negated, excluded, modified, limited or restricted from and in relation to the sale of your Scania part/s are hereby to the extent permitted by law (but not otherwise) negated, excluded, modified, and restricted and the Company's liability shall, whenever permitted by law, be limited to the repair or replacement of any defective or faulty part or the payment of the cost of any such repair or replacement as the Company in its sole discretion determines to be appropriate. Scania Australia Pty Ltd (the Company) warrants that each new Scania Spare Part sold by it or any of its Branches or Authorised Distributors/Dealers to be free from defects in material and workmanship under normal use and service, its obligation under this warranty being limited to repairing or replacing, as hereinafter provided, at its option, at the Company's Branch or Authorised Distributors/Dealers discretion any part or parts found to the Company's satisfaction to be defective upon examination by it.

### Fitted Price Repairs Terms and Conditions

1. Scania Australia standard terms and conditions of sale apply. These are available online at [www.scania.com.au](http://www.scania.com.au) 2. Applies to Retail sales only. 3. Available at participating branches and dealers only. 4. Fitted prices include inspection, diagnosis, verbal assessment, Scania approved parts, labour and consumables. 5. All prices include GST. 6. The published prices apply to the job shown (part numbers & RTS codes) and do not apply to other similar products available from Scania. 7. The Fitted Price Repair special offer pricing cannot be used in conjunction with any other discount or promotion. 8. Fitted Price Repair pricing is part of a promotional offer, which can be withdrawn at any time. In the event Scania Australia chooses to withdraw the promotion, then notice will be issued via the website: [www.scania.com.au](http://www.scania.com.au) . This would not affect any pre-existing or accepted work agreed to by Scania Australia for the duration of the promotion. 9. Scania Australia may in the future alter any terms of this promotion without notice and in the event Scania Australia chooses to alter the terms of this promotion, then notice will be issued via the website: [www.scania.com.au](http://www.scania.com.au). This would not affect any

pre-existing or accepted work agreed to by Scania Australia for the duration of the promotion. 10. All prices assume presentation of the vehicle, by the customer, to the repairing workshop. 11. Additional breakdown related charges will apply if the vehicle has suffered an involuntary stop at the roadside. 12. The Fitted Price Repairs published are created using Scania's standard times based on standard Scania vehicle specifications and do not include any additional labour required for the removal of catwalks, ancillary equipment, bodywork, superstructures or any non-standard equipment fitted to the vehicle. Additional time required to complete the job in respect of these items will be agreed with the customer prior to any work being carried out. 13. Mineral oils are used in all circumstances. Fitted Price Repairs do not include semi synthetic or fully synthetic oils. If these oils are required the difference in price between mineral oil and the semi synthetic or fully synthetic oils will be charged. 14. All information is believed to be correct at the time of going to press, however, Scania reserve the right to introduce at any time modifications of changes to the jobs and or programme as part of a policy of continuous improvement.

### WARRANTY CLAIMS

To make a claim under this warranty:

1. Return the vehicle to a company-owned Scania branch or authorised dealer. 2. Provide details of the warranty (including the invoice for work completed) when delivering your vehicle to the company-owned Scania branch or authorised dealer and ask the service personnel to lodge a claim on your behalf. 3. Complete a claim form if requested. Other documentation such as proof of servicing, invoices etc. may also be required. We will ask for this documentation if we decide that it is required. 4. When travelling away from home, in the event that your vehicle requires emergency repair work and you are unable to deliver your vehicle to a company-owned Scania branch or authorised Scania dealer please contact Scania Assistance on 1300 722 642. Towing, overtime and roadside assistance costs are not covered on any warranty claims.

For more information relating to the terms and conditions relating to warranty claims please contact: Scania Australia Pty Ltd. 212-216 Northbourne Rd, Campbellfield VIC 3061

# PLEASE NOTE: Refundable core fees will be charged at the time of product purchase and will show as a separate line item on your invoice. Core fee credit will be applied to the customer account or invoice when cores are received subject to the following conditions: Cores must be complete, fully assembled, drained of fluids and in rebuildable condition and chassis number and mileage information must also be provided. Burnt products or any cores that are broken damaged or destroyed by incorrect use, dismantling, handling or transportation will not be accepted. Prices within the promotion include GST and conclude end of December 2021, or while stocks last. Images in this brochure are for display purposes only and may not represent actual products. Offers available from your authorised Scania branch or participating dealers. Prices and specifications were correct at the time of printing and are subject to change without notice. ARC Licence number: AU 38531. For a full list of Scania terms and conditions please go to [scania.com.au](http://scania.com.au). RTA # AU07116





**SCANIA Australia Pty. Ltd.**  
212-216 Northbourne Rd,  
Campbellfield, VIC, 3061

SAU072021