



ELECTRIC

PLANNING, BUILDING, MAINTAINING, OPERATING AND FINANCING

# YOUR CHARGING SOLUTION



**SCANIA**





# YOUR NEEDS, OUR FOCUS

When it comes to finding the perfect charging solution, it's all about what's right for you. We're here to guide you every step of the way, from in-depth analysis of your requirements to the creation and construction of the ideal solution. Our commitment extends well beyond the initial setup, supporting your day-to-day operations, and adapting the solution as your needs evolve.

## E-mobility with Scania

Drawing from over 130 years of experience in the transport industry, we transcend the role of a mere vehicle manufacturer. With e-mobility, we recognize its impact not only on us but also on the entire industry. More importantly, we understand how it affects you and your business. Therefore, we're evolving into a complete solution provider, aiming to provide you with the comprehensive solutions necessary to electrify your business. Our goal is to ensure your specific operations run smoothly and sustainably for decades to come.

## Every part of the charging solution

Charging is a vital component of a complete e-mobility solution, and it involves much more than simply plugging in and waiting. Leveraging data analysis from hundreds of thousands of connected Scania vehicles globally, along with your specific operational data, we're committed to more than just planning your optimal solution. We're here to assist with financing, selecting the right hardware and software, managing groundwork, establishing maintenance and support contracts, providing staff training, and offering continuous support throughout your journey.

## Your single point of contact

Through our in-depth analysis and customer centric approach, we gain a comprehensive understanding of your operational needs and business perspective. When you partner with us, rest assured that we'll guide you toward the best charging solution, considering technical, financial, and scalability aspects. No matter what questions come up along the way, we'll be there to address them. You won't have to worry about whom to contact or where responsibilities lie for each part of the charging solution. Any issues, thoughts, or concerns that arise during your journey, simply reach out to your designated contact, and we'll resolve them – be it related to charging, your vehicles, services, or even your financing and insurance needs.



# LET US GUIDE YOUR CHARGING JOURNEY

No matter what combination of depot, public en-route, and destination charging that your needs dictate – our aim is for you to remain fully focused on your core business, while we take charge of everything else. As your guiding partner from the very start, we keep open and continuous communication to attentively listen to your needs and preferences.

## Your operation in the spotlight

To achieve the optimal charging solution, we always centre our attention on your business, ensuring that we are both well-informed and creatively adaptive when addressing critical aspects of your charging solution.



ENERGY NEEDS  
& POWER AVAILABILITY



SUITABLE HARDWARE  
& SOFTWARE



BEST LAY-OUT  
PLACEMENTS AND FUTURE  
SCALE-UP PREPARATIONS



FINANCING, LONG-TERM  
SUPPORT AND REPAIR &  
MAINTENANCE

## TURNING QUESTIONS INTO KNOWLEDGE

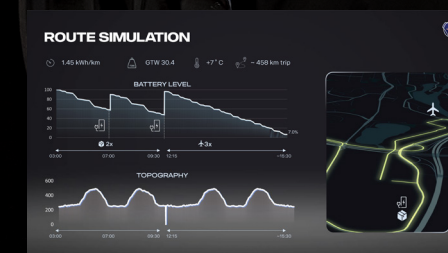


*What vehicles comprise the fleet and what are their electrification plans, including any smaller electric vehicles that require charging? Is the fleet a mix of different vehicle types? What are the planned routes, including stops and distances between them, as well as the average speed? Are there multiple shifts for the fleet, and do they return to the depot or stay at the destination during their shifts? If so, how long are their breaks? How frequently does the fleet make stops during the day? How many trucks will be at the depot per hour? What's the average duration for loading and unloading at each stop? What's the average payload for each route? What is the contracted energy capacity for each site? Are there specific facilities that require additional power, and if so, at which times of the day?*

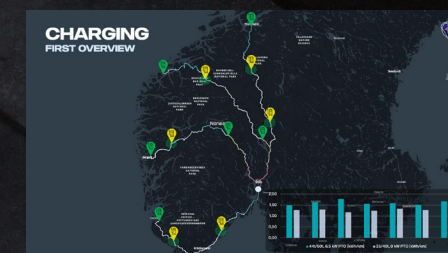
## DATA DRIVEN ANALYTICS TO UNCOVER YOUR BUSINESS NEEDS

The initial and most critical step in tailoring a solution is to gather vital information through rigorous analysis.

Leveraging our in-house analytics tools, we simulate scenarios to understand your requirements and transform your electrification plans into reality. This involves assessing energy consumption, battery levels per distance, and factors like concurrent truck charging and optimal charging opportunities.



Our energy analysis considers various factors, including non-vehicle power demands and contracted facility capacity. This deep understanding allows us to assess energy demand, identify capacity requirements for cost-efficient charging, and optimise total cost of ownership.



This comprehensive analysis forms the foundation for the right charging solution, helping us pinpoint energy consumption peaks, estimate energy costs, and provide insights for infrastructure upgrades, both immediate and future.

Our all-encompassing solution covers depot charging, public en-route charging, destination charging, and Scania Service center charging. We offer support in financing, planning, construction, and ensure long-term maintenance as part of the Scania charging offer.



# HIGH-QUALITY HARDWARE

We exclusively utilise various types of rigorously tested charging hardware sourced from reputable, high-quality manufacturers. Our aim is to tailor the perfect charging solution for your unique needs and prerequisites.

Our range includes:

- 1 All-In-One Stations** – These combine charging equipment and power units into a single stationary unit, enabling the simultaneous charging of up to 2 vehicles.
- 2 Satellite chargers** – A combination of external power unit cabinets centrally located and satellite poles strategically placed throughout the charging area.
- 3 Wallboxes** – These stand-alone, compact chargers are wall-mounted and ideal for locations where minimal cabling is required or requested.
- 4 Portable chargers** – These mobile units are equipped with wheels, making them easy to move around.

# SMART SOFTWARE & SERVICES

A Charging Management System (CMS) adds intelligence to your charging infrastructure, offering tools to monitor and control your chargers effectively, thus enhancing your business efficiency. The CMS contributes to both your vehicles' operational readiness and optimising grid capacity, leading to reduced infrastructure investments and daily energy costs.

## CMS benefits

- **Charger Monitoring and Control** – Keep track of and manage your chargers seamlessly.
- **Charging Scheduling** – Schedule charging to avoid peak energy prices and minimize energy costs.
- **Efficient Vehicle Charging** – Distribute the charging of multiple vehicles and give priorities to specific assets throughout your charging sessions.
- **Load Balancing** – Crucial for optimising performance, ensuring reliability, and preventing overloads in computer networks and server systems by distributing traffic or workloads efficiently across multiple resources.



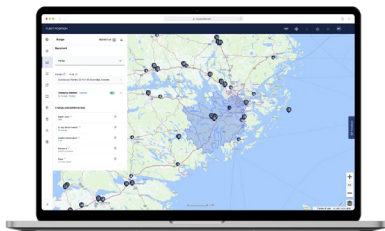
# PUBLIC EN-ROUTE CHARGING WITH SCANIA CHARGING ACCESS

Scania Charging Access is a service designed specifically for public en-route charging for trucks. Our goal is to extend the reach of your electric operations and fulfill a wider range of transport requirements. We offer a straightforward and dependable solution with no sign-up costs, monthly fees, or hidden charges. You'll receive a single monthly invoice, regardless of the number of charging cards or vehicles, and you can conveniently manage it all through My Scania.

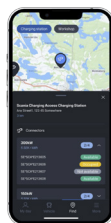


## Addressing varied roles & needs

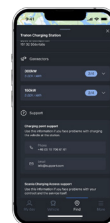
En-route charging isn't just about catering to drivers – it's equally important to ensure a smooth experience for transport administrators. That's why different roles within your operation are provided with access to interfaces and functionalities tailored to their specific requirements.



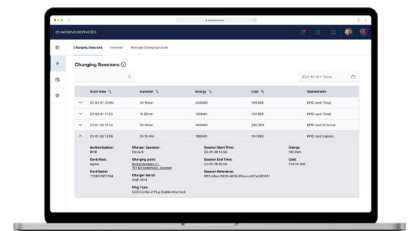
Transport planning



Public Charging



Support Needs



Administrative handling

## MAKING YOUR SOLUTION A REALITY

Our solution offering covers financing of the infrastructure in a way that suits your business long-term. It also ensures that once the infrastructure is in place it is continuously covered in terms of Repair & Maintenance needs, as well as providing you with support for all of it wherever and whenever it's needed.

### Financing coverage

- Vehicles – both new and second-hand
- Body building / customisation
- Trailers and auxiliary equipment
- Chargers & Charging infrastructure
- Repair and Maintenance contracts
- Digital services package

### Financing models

- Loan / Hire Purchase
- Financial lease
- Operational lease



## Do you have answers to these questions?

Are you confident in your understanding of your charging needs and prerequisites, or do you have unresolved queries?

- ☒ What are the primary challenges in constructing my infrastructure?
- ☒ What are the energy requirements for my operations?
- ☒ What capacity levels are necessary?
- ☒ Which hardware is the best fit for my operations?
- ☒ Which charging software is most suitable?
- ☒ What's the optimal charger layout?
- ☒ How can I manage charging to minimize disruptions?
- ☒ What's the plan for scaling up my solution?

### Contact us, and we'll work together to find the answers

No matter your electrification goals or operational and business requirements, reach out to us, and we'll kickstart the analysis and embark on this journey together.